

# WO BRE NKATEE AHURA ASE



## NSONSUANSO KESE



NKATEE A YAREE  
AKYE NO



NKATEE A YENTU  
NO NTEM



NKATEE A Y'AHATA  
NO FOM



KOTOKUO ANAA BOTO  
FI MU A ESI FOM



NKATE A  
W'ANNYIYI MU

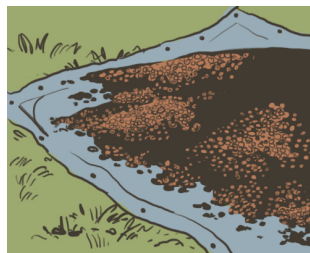
## NSONSUANSO KUMAA



NKATEE A YARE  
ANKYE NO



NKATEE A YETUU  
NO NTEM



NKATEE A W'AHATA  
NO "TAPOLIN" SO



KOTOKUO PA A  
W' NNFANSI FOM

## MFASO PA



NEE  
ESOMBO



NEE EMA  
DWADIE KO SO



MMOFRA A W' WJ  
APOMUDEN



NKATE A  
ABO PII



ADUANE EMA  
YADEE



EBRE KOKRAM  
ASE



NKATEE A W'EYIYIMU

Sua nnooma pii firi [PMIL.CAES.UGA.EDU](http://PMIL.CAES.UGA.EDU)



THE UNIVERSITY OF GEORGIA  
COLLEGE OF AGRICULTURAL &  
ENVIRONMENTAL SCIENCES



FEED THE FUTURE  
The U.S. Government's Global Hunger & Food Security Initiative